



VENTURE UGANDA



A trusted, local DMC for Uganda and Rwanda



This presentation has four sections:

1. Company and general information
2. Responsible Travel
3. About Uganda
4. About Rwanda

**The company was established in 2010.
It is owned by two friends and supported by an established team in the Kampala office.**

Lesley Harris - Managing Director



- British
- Lived in Uganda for 25+ years
- Originally worked in global development, switching to tourism in 2009
- Keen interest in education, sustainable development and travel
- Recently re-located to the UK

Byaruhanga Michael - Operations Director



- Ugandan
- Ex-armed forces
- Extensive experience in the transport sector
- Professional tour guide and bird guide
- Interests include farming, meeting people and travel



Outstanding visits for inbound FIT and Small Groups



Wildlife & Birding | Culture & Community | Outdoor & Adventure | Educational Visits

Products and Services

- **Meet & Greet** and **airport transfers**
- **Vehicles** –7-seater, 4x4, safari-modified Land Cruisers, safari vans and small buses.
- **Domestic and regional flights** – by small plane or helicopter.
- **Accommodation** - we sell the full range of available accommodation with a choice of meal plans
- **Activities:**
 - Fly-in or driving **wildlife safaris** – game drives, boat cruises, safari walks, cycling safaris, horseback safaris, night game drives
 - **Bird watching** for both avid and leisure birders
 - Authentic **cultural experiences and community visits**
 - Thrilling **outdoor and adventure activities**
 - **Special interest activities** e.g. botany, mammal watching
- **Tracking permits** for gorillas, chimpanzees, golden monkeys and rhinos
- **Professional guides** including women, foreign language speakers and specialist bird guides
- We design **specialist educational visits** for schools and universities





Professional Guides

- Wildlife & nature guides – most know both Uganda and Rwanda well
- Bird guides
- Cultural guides
- Women guides
- Foreign language speakers
- Site guides
- Park rangers (armed)















- First aid kit
- Fire extinguisher
- Regularly serviced
- Comprehensively insured
- Client info pack

Vehicles

- 5 or 7-seater, each seat with window
- Air conditioning
- 2 roof hatches
- Fridge with mineral water & snacks
- Charging sockets
- Internet



The weather in Uganda and Rwanda is similar

Jan	Feb	March	April	May	June	July	Aug	Sep	Oct	Nov	Dec
											

- **All-year destinations** with a pleasant climate and temperatures in the **mid 20s°C**.
- The seasons have become less predictable due to climate change.
- **Peak seasons usually coincide with dry seasons.** It is more crowded; flights may be more expensive and **tracking permits and accommodation need booking well in advance.**
- In low seasons, there are fewer tourists so you can have the place to yourselves! Some accommodations have seasonal pricing.
- In both countries, most major roads leaving the capital city are tarmac and not affected by the rains.
- National park authorities often practice controlled burning at the end of dry seasons. The scorched earth does not look very attractive, but the grass is lower making animal sightings easier.
- Ask us about the best times for **bird watching** and **mountain climbing** and visiting **Kidepo Valley** national park, Uganda.

Operations and compliance

- ✓ Uganda-registered company
- ✓ Tax clearance from Uganda Revenue Authority
- ✓ Licenced by the Uganda Tourism Board
- ✓ Licenced by the Kira Town Council, Wakiso District
- ✓ Full member of the Association of Uganda Tour Operators (AUTO)
- ✓ Registered with the Uganda Revenue Authority
- ✓ Tour Operator Liability insurance to 1 million USD
- ✓ General Risk Assessment in place

Enquiries

Office hours: Mon-Fri, 09:00am - 17:00pm Ugandan time

- ✓ Lesley@ventureuganda.org (partnership enquiries)
- ✓ sales@ventureuganda.org (sales enquiries)
- ✓ office +256 393 20 20 33
- ✓ office mobile & WhatsApp +256 784 824 902
- ✓ www.ventureuganda.org.

Responsible Travel

- ✓ Advise clients using our local knowledge
- ✓ Recommend responsible accommodation
- ✓ Help local people and communities to join tourism
- ✓ Educative visits to wildlife and nature
- ✓ Carbon offsetting by planting trees in our forest
- ✓ Offer 'off-the-beaten-track' travel experiences
- ✓ Support other organisations who act responsibly
- ✓ Avoid single-use plastics & provide re-fillable bottles
- ✓ Seek technology to help us improve sustainability
- ✓ Promote regional holidays: slow down, stay in one area
- ✓ Promote year-round travel
- ✓ Provide authentic community experiences
- ✓ Prioritise locally-owned suppliers
- ✓ Promote balanced reporting about Uganda
- ✓ Ensure our profits stay within Uganda
- ✓ Employ and develop Ugandan staff
- ✓ Support our own village community
- ✓ Sell fairly-priced, quality holidays
- ✓ Provide expert local guides





Supporting Wildlife Conservation

e.g. Gorilla tracking is helping gorilla numbers to increase.

e.g. Visiting Ngamba helps care for orphaned and injured chimps.



Community-based Tourism

Boosting incomes in local communities





Cultural Visits

Visiting bark cloth makers helps to preserve and showcase traditional culture



Staff housing for local school



National park visit for park-boundary school kids



Donations



Sports kits to schools



New boat for community bird guide



We love our home.

We want our guests to enjoy the best time and have a positive impact.





Welcome to Uganda: “The Pearl of Africa”

Uganda

Population 47m

Regions:

- Western
- Central
- Eastern
- Northern

National parks

Lake Victoria: Source of the River Nile

Approx. driving times from Kampala:

Entebbe - 45 mins

Murchison – 5.5 hrs

Kibale – 5 hrs

Bwindi – 8 hrs

Kidepo – 8 hours



Uganda Wildlife

Primates

- Mountain gorillas
- Chimpanzees
- 20 other primate species

The Big 5

- Lion
- Rhino (southern white)
- Buffalo
- Elephant
- Leopard

Big cats and other mammals, large and small

Birds

Over 1,000 bird species including the much sought after **Shoebill**

Insects, reptiles, butterflies & moths

Uganda Wildlife Authority runs the national parks



Gorilla tracking

Bwindi Impenetrable national park

Around 22 family groups.

Starting points for tracking in 4 forest sectors:

- 1) Buhoma (north), 2) Ruhija (east)
- 3) Rushaga (south), 4) Nkuringo (west)

Mgahinga Gorilla national park

1 family group. 1 starting point.

Av. tracking time: 3-6 hours. Spend 1 hour with them.

Permits cost USD 800 pp. and must be paid for, in full, upon booking, and are non-refundable. A 4-hour habituation experience with semi-habituated gorillas, costs USD 1,500pp.

Tariffs will increase from 1/7/26. Minimum age 15 years.

Most clients will be fit enough to track, given the support available. We recommend hiring local porters.

Visit Conservation Through Public Health - the NGO of gorilla vet and award-winning conservationist, Gladys Kalema Zikusooka.

Also Visit Gorilla Doctors NGO.



Chimpanzee tracking

Locations:

- **Kibale national park**
 - Budongo Forest – Murchison Falls national park
 - Kyambura Gorge – Queen Elizabeth national park
 - Kalinzu forest, near Queen
 - Bugoma forest, between Murchison & Kibale
- Av. tracking time 2-5 hours. Spend 1 hour with them.



Golden Monkey Tracking

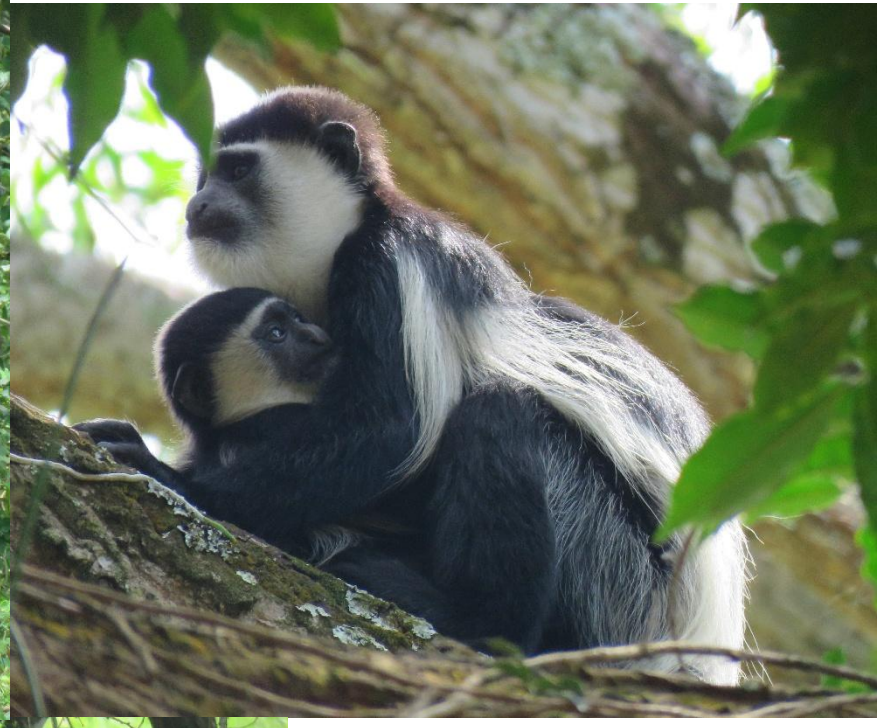
In Mgahinga Gorilla national park.

Av. tracking time 2-5 hours. Spend 1 hour with them.



Wildlife viewing on game drives, boat cruises, walking safaris, mountain bike and horseback safaris









Bird watching

- Over 1,000 bird species including Uganda's only endemic – the Fox's Weaver – and Albertine Rift Endemics
- Various habitats: savannah, forest, woodland, riverine, montane, high altitude, open water
- Expert bird guides
- All-year birding

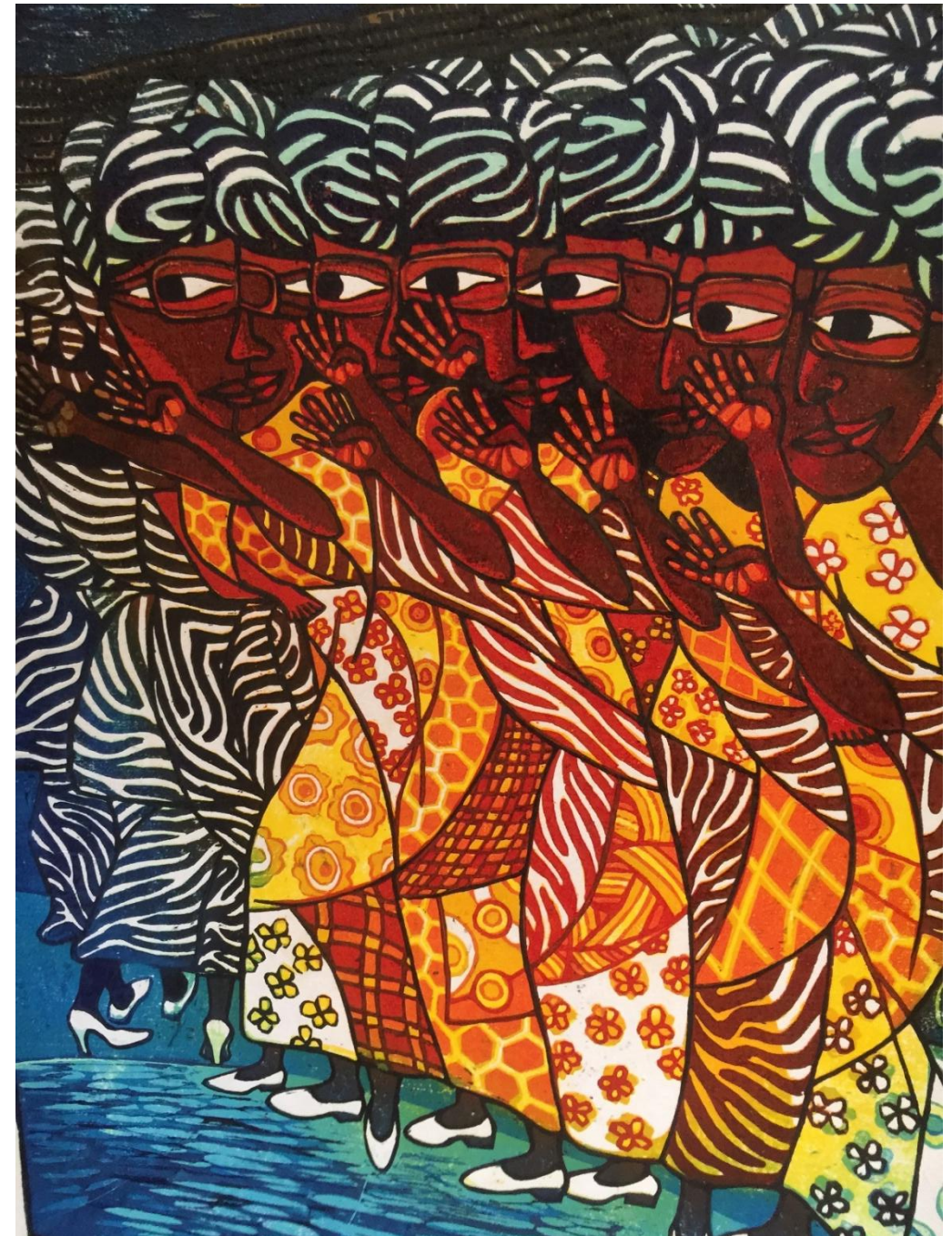




Cultural & Community visits

A wide range of immersive, authentic and sensitively-crafted visits with opportunities to participate and interact with local people.

- Farm visits – coffee, mango, general
- Arts & crafts
- Tribal visits including cattle keepers
- Community visits & walks
- Traditional activities e.g. bark cloth making, salt production
- Food preparation & tasting
- Musical instruments
- Historical & religious visits
- Cultural & heritage sites
- Traditional music and dance show
- School visits
- Festivals: cultural, music













Outdoor & Adventure Activities

Explore Uganda's stunning landscapes, fascinating villages and expansive water bodies on a range of guided adventure activities.

- Hiking & mountain climbing
- Running
- Cycling & mountain biking
- Motorbiking & quad biking
- River activities: rafting, kayaking, tubing, paddleboarding, bungee jumping
- Horse riding
- Marathons & triathlons
- Yoga
- Fishing
- Road trips
- Kids activities e.g. bush craft, rafting











Educational Visits

Specialist field courses for universities

Safe, affordable and enjoyable courses.

Applying classroom learning to real world situations and evaluating the findings.

Covering a range of disciplines like development studies, environmental management and anthropology.

Activities ranging from visits, through data collection, to lectures.

School visits

- ✓ Subject-related activities
- ✓ Personal development
- ✓ Service activities
- ✓ Recreation











VENTURE UGANDA



Mt. Gahinga Lodge, Kisoro



Honey Bear Camp - Queen



Apoka Safari Lodge, Kidepo



Bwindi Lodge, Buhoma



Kyaninga Lodge, Fort Portal



Nile Safari lodge, Murchison

Ugandan Properties - luxury



Mihingo Safari Lodge, Lake Mburo



Mahogany Springs, Bwindi



Buffalo Safari Lodge, Queen



Rwakobo Lodge, Lake Mburo



Turaco Treetops, Kibale



Pakuba Safari Lodge, Murchison

Ugandan Properties – mid-range



Home of friends, Kapchorwa



Fort Murchison, Murchison



Chimpanzee Forest GH, Kibale



Bush Lodge, Queen



ViaVia Guest House, Entebbe



Ride 4 A Woman Guest House, Bwindi

Ugandan Properties - budget

International flights to/ from Entebbe

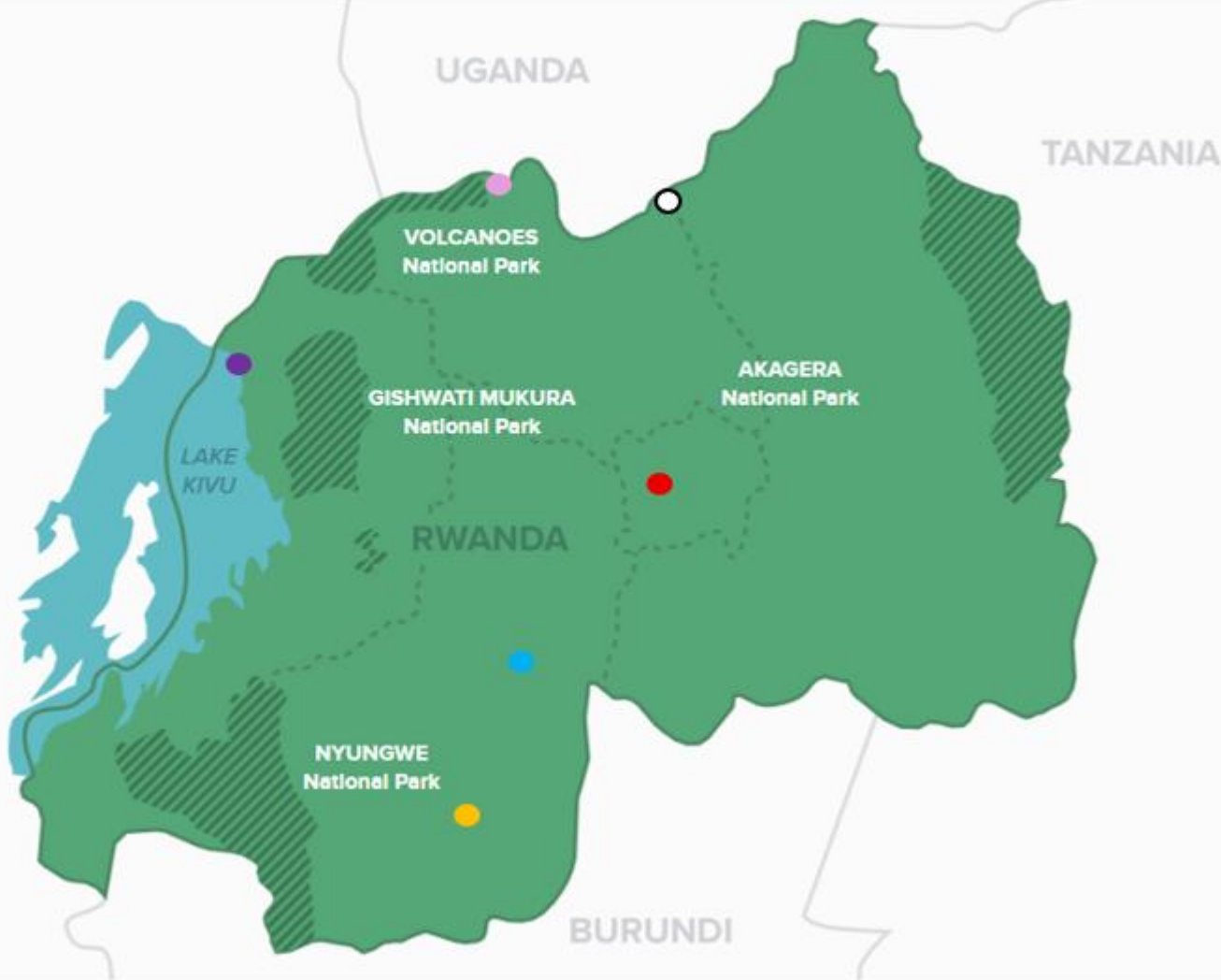
- Uganda Airlines
- Brussels Airlines
- KLM
- Kenya Airways
- Emirates Airlines
- Qatar Airways
- Ethiopian Airlines
- Rwandair
- Turkish Airlines





Welcome to Rwanda: Land of a Thousand Hills





Rwanda

Population 14m

Approximate driving times

Kigali to:

Volcanoes NP 2.5 hours

Akagera NP 2.5 hours

Nyungwe NP 5.5 hours

Volcanoes to Nyungwe 5 hrs

● Kigali (capital)

● Rubavu

○ Gatuna border crossing

● Cyanika border crossing

● Nyanza

● Huye



Rwanda Wildlife

Primates

- Mountain gorillas (Volcanoes NP)
- Chimpanzee tracking (Nyungwe NP)
- Golden monkey tracking (Volcanoes NP)
- 10 other primate species

The Big 5

- Lion
- Rhino (eastern black)
- Buffalo
- Elephant
- Leopard

Big cats and other mammals, large and small

Birds

Over 700 bird species including the much sought after **Shoebill**

Insects, reptiles, butterflies & moths

National parks are run by Rwanda Development Board in partnership with African Parks NGO



Gorilla tracking

Volcanoes national park

Around 12 family groups

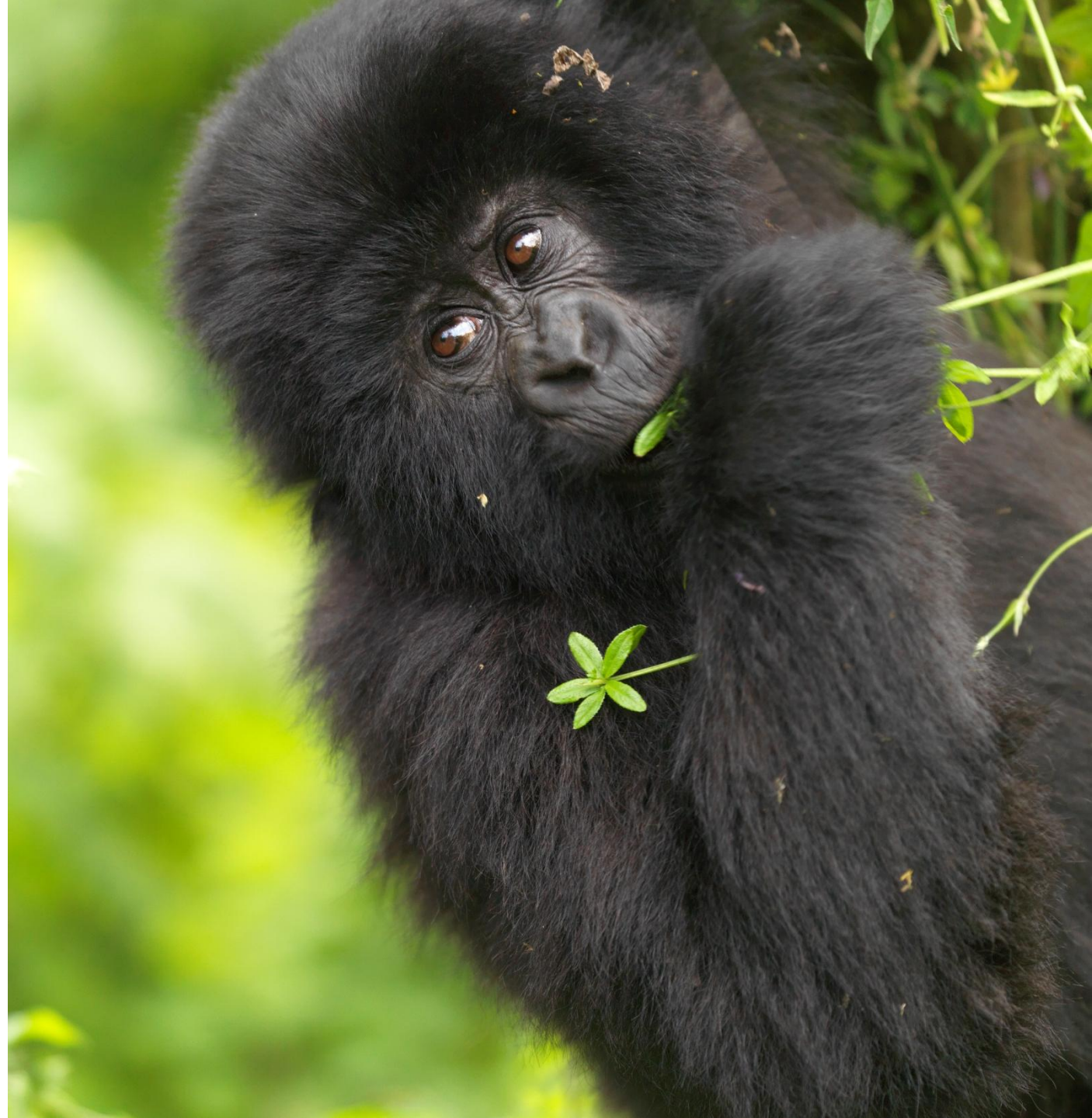
Av. tracking time: 3-6 hours. Spend 1 hour with them.

Permits cost USD 1500 pp. and must be paid for, in full, upon booking, and are non-refundable. Minimum age 15 years.

Most clients will be fit enough to track, given the support available. We recommend hiring local porters.

Rwanda hosts a gorilla naming ceremony called **Kwita Izina**, in September each year. This is held in Musanze District at the foot of Volcanoes national park. It celebrates successful gorilla conservation and all those working in it.

- Hike to **Diane Fossey tomb**
- Visit **Ellen DeGeneres research & education center**.
- Visit **Gorilla Guardians** cultural village including ex-poachers





Wildlife viewing: game drives, boat cruises, walking safaris.
Highlights: behind-the-scenes conservation experience at Akagera NP,
Canopy walk in Nyungwe NP.







Bird watching

- Over 700 bird species including the Albertine Rift Endemics
- Various habitats: savannah, forest, woodland, riverine, montane, open water
- Expert bird guides
- All-year birding





Nyandungu Eco-park: a reclaimed wetland in Kigali with extensive paths for walking and scootering

Cultural & Community visits



A wide range of immersive, authentic and sensitively-crafted visits with opportunities to participate and interact with local people.

- Farm visits – coffee, general
- Arts & crafts
- Community visits & walks
- Traditional activities e.g. basket weaving
- Food preparation & tasting
- Historical & religious visits e.g. ethnographic museum
- Cultural & heritage sites e.g. King's palace
- Traditional music and dance show
- School and community organisation visits e.g. Urugo women and Hirwa children





VENTURE UGANDA










HIRWA CHILDREN FOUNDATION


AKAGERA COMMUNITY
TOURISM & BIKE RIDE
TEL: 0782571855 / 0794090930

It's pleasure to welcome you
to our
community of members
Hirwa Children Foundation


Welcome to our community
We are a community of members
who are passionate about
supporting the growth and
development of our community
and its members. We are
committed to providing
support and resources to
our members and their
families.





Outdoor & Adventure Activities

Explore Rwanda's stunning landscapes, fascinating villages and expansive water bodies on a range of guided adventure activities.

- Hiking
- Cycling & road racing
- Congo Nile Trail
- Kayaking, canoeing
- Marathons & triathlons
- Road trips
- Kids activities





Educational Visits

Specialist field courses for universities

Safe, affordable and enjoyable courses.

Applying classroom learning to real world situations and evaluating the findings.

Covering a range of disciplines like development studies, environmental management and anthropology.

Activities ranging from visits, through data collection, to lectures.

School visits

- ✓ Subject-related activities
- ✓ Personal development
- ✓ Service activities
- ✓ Recreation





VENTURE UGANDA







The rebirth of Kigali Towards
a vibrant City

Inclusive Prosperous Innovative
Community-Focused Prosperous Inclusive
KIGALI YACU KIGALI EYEY



Wilderness, Magashi Camp, Akagera



Wilderness, Bisate Lodge, Volcanoes



One & Only, Nyungwe House tea



Singita, Kwitonda, Volcanoes NP



Virunga Lodge, Volcanoes NP



One & Only Gorilla's Nest, Volcanoes

Rwandan Properties - luxury



Akagera Game Lodge



Five Volcanoes



The Retreat, Kigali



Top View Hill hotel, Nyungwe



Umurobyi Lodge, Lake Kivu



Serena, Lake Kivu

Rwandan Properties – mid-range



Transit Lodge, Akagera



MaterBoni, Huye



Amata n'ubuki boutique hotel, Kigali



Le Bamboo Gorilla Lodge, Volcanoes



Nziza Eco-Lodge, near Nyungwe



Orchids Safari Club, Lake Kivu

Rwandan Properties - budget

International flights to/ from Kigali

- Rwandair
- Uganda Airlines
- Brussels Airlines
- KLM
- Kenya Airways
- Emirates Airlines
- Qatar Airways
- Ethiopian Airlines
- Turkish Airlines
- EgyptAir

Charter helicopter flights are available
to all national parks



'Nuggets' – a few final ideas for some special activities

1. Go off-track in Queen Elizabeth national park on a **lion tracking experience**. Led by a researcher, this is a great opportunity to learn more about the big cats and conservation work while enjoying great sightings.
2. Explore Lake Muro national park by **mountain bike or on a safari walk**. Your guide will show you things like tracks and dens not seen from a vehicle and get you closer to the animals.
3. Learn how **bark cloth** is made by stripping the bark from a special fig tree and then bandaging the tree in banana leaves so the bark grows back. Participate as the bark is processed by boiling and beating. Hear about the cultural significance of the cloth, in an authentic village setting, on this private visit.
4. **Tour a coffee farm**, harvesting ripe cherries in season and planting a tree to celebrate your visit. Roast and pound the coffee beans and taste a cup. Learn about the farmers group and other features like the herb garden or bio gas.
5. If you would like to know more about community development – from education, through healthcare to improving livelihoods - let us take you to **visit a local organisation** to hear about their work and meet the inspiring staff.
6. Enjoy a **sensitive visit to a local village home**. Harvest food from the family's gardens, walk through the community into the nearby hills, prepare and enjoy a family meal together, followed by evening storytelling, before spending the night.
7. **Meander down the River Nile, in Murchison Falls national park, with a local fisherman**. Gain an insight into the fishing life, enjoy the birdlife and tour the fishing village on Lake Albert where you land and re-connect with your guide to continue your safari.
8. Enjoy a **private meeting with a Park Warden** for evening drinks at your lodge, to hear all about the successes and challenges of local conservation work.
9. We have a range of visits for tourists wishing to learn about the **history and culture** of our destinations. For example, meet the mosque superintendent for a tour and to learn about the introduction of Islam into Uganda. Or enjoy an after dinner talk about the Bunyoro Kingdom and visit sites later in the itinerary.
10. We have a piece of land next to a forest fragment between Queen and Bwindi national parks. Those taking this route can pass by for a walk and to **plant some indigenous trees to help us protect the forest**.



Tree planting on our private land